

SHERPACOMBI

COMBINED EMISSION ANALYSER
Petrol & Diesel

Sherpa[®]
AUTODIAGNOSTIK



The SHERPACOMBI Combined Emission Analyser is a British built PC based unit suitable for petrol and diesel vehicles. Standard features include a wireless diesel smoke head and engine speed/temperature readings taken via the EOBD socket using the multi RPM module, cables to break or trip over are a thing of the past! Every MOT test is stored to memory for instant retrieval. A Wi-Fi enabled PC is supplied as standard and includes a CD Rom, 19 inch colour monitor, keyboard and mouse. Unlike many other products on the market – the PC also comes with a 3 year warranty!

Every MOT test is stored to memory for instant retrieval and automatic print out of customer reminder letters.

Wi-Fi enabled PC with flexibility to run own programmes, CD Rom, 19 inch colour monitor, keyboard mouse and printer.

Fast nationwide on-site support by dedicated UKAS accredited engineers.

100% British Design & Manufacturing

GEA & DVSA Approved

TECHNICAL SPECIFICATION

Approval	Class 4, 7, HGV, PSV, RPC & SVA
Suitable for	Petrol and Diesel Vehicles (Both car and commercial)
Size of display	19" colour monitor
Smoke head	RADIO Wireless (remote operation of up to 100m)
Operating temperature	- 15 °C - +40 °C (all weather conditions)
RPM measurement	EOBD or Battery
Temperature reading	EOBD or dipstick
Weight of smoke head	5kg
Printer	A4

Sherpa[®]
AUTODIAGNOSTIK



3 YEAR WARRANTY!

(subject to maintenance - terms and conditions apply)



Distributed and maintained in the UK by GEMCO Equipment Ltd
01604 828 500 (t) | www.gemco.co.uk (w) | sales@gemco.co.uk (e)

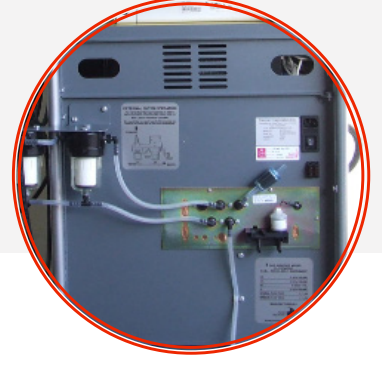
SHERPACOMBI

COMBINED EMISSION ANALYSER

Sherpa[®]
AUTODIAGNOSTIK

KEY BENEFITS **Smoke meter**

- Diesel smoke head, no more cables to break or trip over.
- Remote operation of up to 100m of combi workstation.
- Docking station ensures smokehead is always ready to use.
- Operates down to -15C in all-weather conditions.
- Fast pass, simple to use, speed up your smoke testing times.
- Automatic calibration with every test, no more filters to lose or break.
- Approved for Class 4, 7, HGV, PSV, RPC & SVA.



KEY BENEFITS **Gas analyser**

- Fast test routines for increased productivity.
- RPM and temperature via multi RPM module, reads engine speed and temperature from EOBD diagnostic socket on all EOBD compliant cars. This also provides additional flexibility when it comes to RPM and oil dipstick probe measurements on older model cars.
- Future proof technology, hardware is designed for upgrade to read fault codes from EOBD compliant vehicles, ensuring your new SHERPACOMBI emissions analyser is ready for future MOT developments.

Sherpa[®]
AUTODIAGNOSTIK



3 YEAR WARRANTY!

(subject to maintenance - terms and conditions apply)



Distributed and maintained in the UK by GEMCO Equipment Ltd
01604 828 500 (t) | www.gemco.co.uk (w) | sales@gemco.co.uk (e)