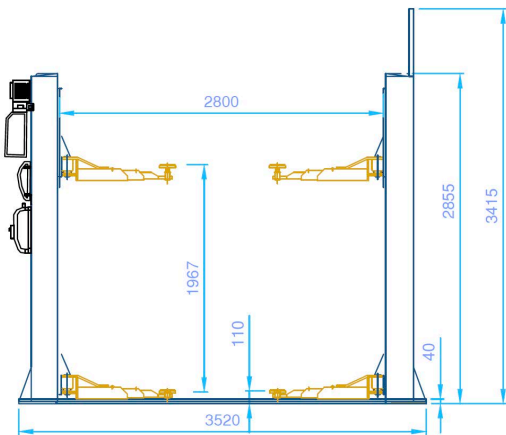
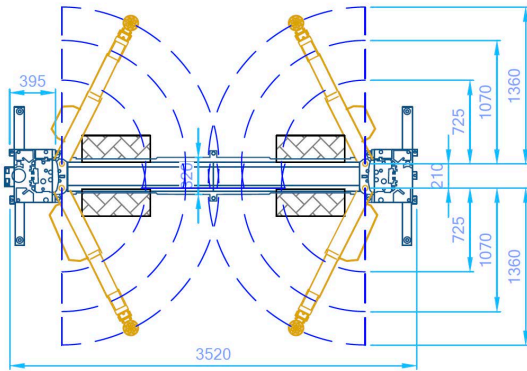



# DL240B+ / Two Post Electro-hydraulic Lift H Frame 3 stage arms front and rear!

The Dunlop DL240B+ Two Post Electro-hydraulic Lift features a large 4 tonne lifting capacity and is supplied with a solid H Baseframe. This lift is suitable for cars and vans (excluding LWB). Available with a choice of single or three phase motors at no extra cost.



## TECHNICAL SPECIFICATION

Lifting capacity	4 tonnes	Electrical Supply	380/415 Volt 16a Isolator (3Phase)
Lifting time	40 seconds		220/240 Volt 20a Isolator (1 Phase)
Minimum height	110mm	Packaged Dimensions	2870 x 842 x 510mm
Lifting Height	1967mm	<b>Optional Extras</b>	
Distance between posts	2800mm	Pad Extension Kit	80mm + 150mm <b>(Part Number 99991306)</b>
Overall width of lift	3520mm		
Front arms (3 stage)	725mm - 1360mm		
Rear arms (3 stage)	725mm - 1360mm		
Warranty	12 months parts & labour*		

\*GEMCO's full terms and conditions, including details of warranty can be found on: [www.gemco.co.uk](http://www.gemco.co.uk). Specifications/Images subject to change without prior notice. E&OE Images are for illustration purposes only.